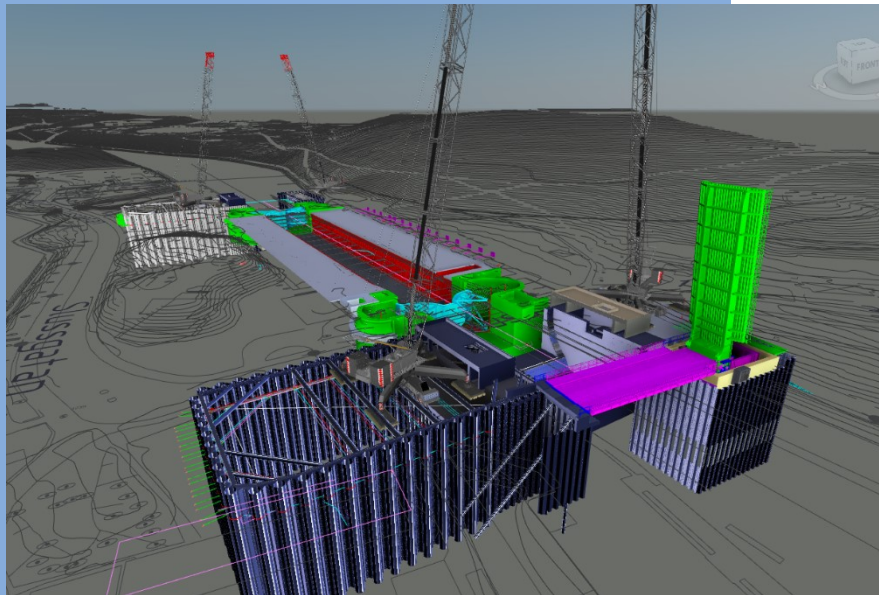


Field of expertise: Offshore engineering, special equipment

Client: Züblin Scandinavia AB



Lock at Södertälje

‘A design lock and execution methods’

Project description

In this project, MH Poly uses its expertise both in design, and advice on the most efficient way to transport the constructed lock head. In combination with Iv Infra, the design of hydraulics and lock gate, the interfaces for the entire lock head are bundled in one joint venture. During the tender phase MH Poly indicated the interfaces between the separate elements of the lock, as well as identified optimisations and suggested a more efficient construction method to adhere to the restrictions with regards to channel blockage.

Project activities

- ◆ Winning tender design with alternative working methods;
- ◆ Design calculations: concrete lock heads including reinforcement and steel door design including hydraulic analysis, bascule bridge construction and abutments;
- ◆ Advice and design of method of transportation of fully built lock head;
- ◆ Drawings: plan overviews, construction details and cross-sections, 3D-animations;
- ◆ Reports: Design basis, sustainability report, drawing explanation guides, construction planning;
- ◆ Risk analyses for construction methods, for chosen structural parts, alternative foundation choices etc.